

# Royal Household Mail

Postal Markings and Cachets from 1990 to Q1 2012

An update to the *Royal Household Mail* handbook, 1992

Glenn H Morgan

Note: There are a number of postal markings that were introduced years or even many decades before the Vidler and post-Vidler years which are included here, but separately from recent markings. They were gradually phased out from 1990 onwards and none probably still exist in use, especially when counter services were withdrawn from Balmoral, Holyrood and Sandringham.

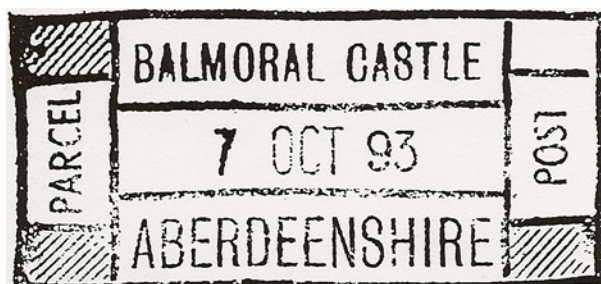
This compilation excludes any markings known *not* to have been used from 1990 onwards.

(See the 1992 *Royal Household Mail* handbook by Glenn H Morgan for those.)

## **Balmoral Castle**

Balmoral Castle on the Balmoral Estate in Aberdeenshire, Scotland is the private residence of The Queen. Mail from this castle is collected and handled by Royal Mail Aberdeen. Post Office counter services were permanently withdrawn on 9 October 2000.

### **No longer in Use**



Introduced pre-Vidler era, but still used subsequently

## **Rectangular Postage Paid Cancellations**



Date introduced  
Intended Usage

Never introduced. Only proof pulls should exist  
First class mail destined for inland addresses



Date introduced  
Intended Usage

Never introduced. Only proof pulls should exist  
Mail destined for overseas addresses, hence inclusion of Great Britain

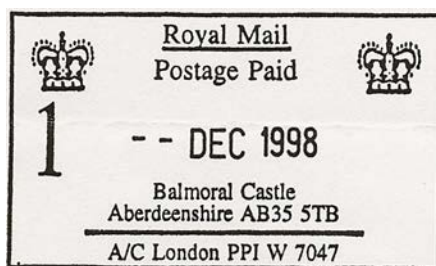
## Still in Use in Q1 2012

### Circular Court Post Office Date Stamps



Date introduced	By 1998
Date range seen	1998 to 2012
Usage	First Day Covers.

### Rectangular Postage Paid Cancellations



Date introduced	1998
Date range seen	1998 to 2012
Usage	First class mail destined for inland addresses
Notes	Incorporation of Aberdeenshire and postcode, plus 'A/C'. Introduced due to new 'operational requirements'



Date introduced	1998
Date range seen	1998 to 1998
Usage	Mail destined for overseas addresses, hence inclusion of Great Britain
Notes	Incorporation of Aberdeenshire and postcode, plus 'A/C'. Introduced due to new 'operational requirements'

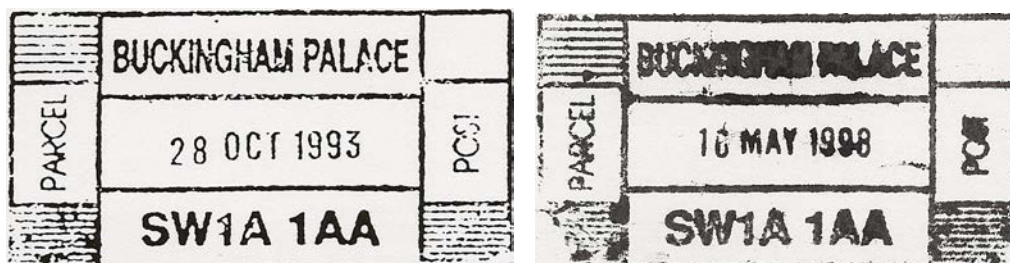
## Not seen but known to exist

Date introduced	2008
Date range seen	2008-2012
Usage	Second class mail destined for inland addresses

## Buckingham Palace

Buckingham Palace has served as the official London residence of Britain's sovereigns since 1837 and today is the administrative headquarters of the Monarch. Mail from this palace is collected and handled by Royal Mail Nine Elms.

### No longer in Use



**Code K**



**Code P**

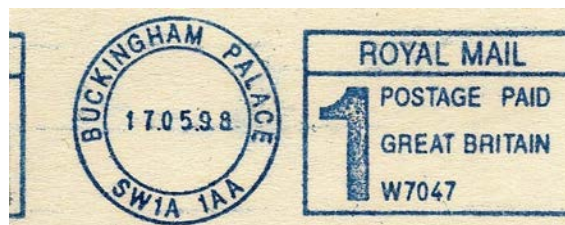
**All above introduced pre-Vidler era, but still used subsequently**

## **Circular Machine Struck Royal Monogram Cachets**



Date introduced	1998 (12 January)
Date range seen	1998 to 2003
Usage	Applied by franking machine in conjunction with the initial blue postage paid meter markings recorded below, but only on mail destined for Inland and Commonwealth nations where Her Majesty or her Household was writing to one of The Queen's subjects. Foreign mail was therefore not treated this way.
Notes	Not used where a hand struck certifying mark had already been applied. Blue colour only exists.

## **Meter Machine Postage Paid Cancellations**



Date introduced	1998 (12 January)
Date range seen	1998 to 2003
Usage	Mail destined for any address, hence inclusion of Great Britain, avoiding the need for a separate die for inland mail
Notes	Machine supplied by Pitney Bowes. Exists in blue only.





(B&W photocopy of blue impression)

Date introduced	2001 (2 April)
Date range seen	2001 to 2003
Usage	Mail destined for any address, hence inclusion of Great Britain, avoiding the need for a separate die for inland mail
Notes	Machine supplied by Pitney Bowes. Exists in blue only

## Circular Court Post Office Date Stamps



Date introduced	By 1993
Date range seen	1993 to 1993
Usage	Mail bag tags and general use.
Notes	Large text, Small date. Seen in purple only



Date introduced	By 1998.
Date range seen	1998 to 1999
Usage	General counter use
Notes	Small text, large date

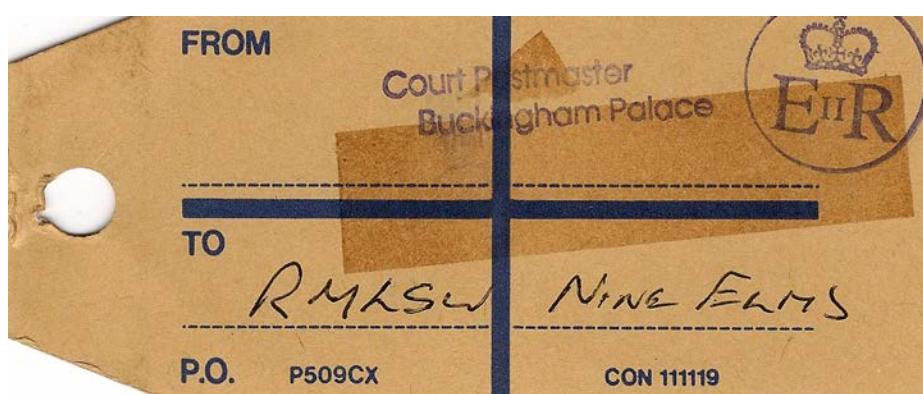


Date introduced	By 2005
Date range seen	2005 to 2005
Usage	Mail bag tags and general use
Notes	Extra large date



Date introduced	By 1998
Date range seen	1998 to 1998
Usage	General counter use

## Straight Line Court Post Office Cachets



Date introduced	19__
Date range seen	19__ to 19__
Usage	Mail bag tags
Notes	Seen in purple only



## Straight Line Cachets



Date introduced	19__
Date range seen	19__ to 19__
Usage	Mail bag tags
Notes	Seen in purple only

## Still in Use in Q1 2012

### Circular Royal Monogram Hand Struck Cachets



Date introduced	By 1993
Date range seen	1993 to 2012
Usage	Outgoing mail destined for Inland and Commonwealth addresses only. Not used on Foreign mail
Notes	Note incorrect use of '11' (eleven) instead of 'II' between the E and the R. Seen in red, black and purple.

### Circular Office Date Stamps



Date introduced	By 1998
Date range seen	1998 to 2002. Seen in black (mainly) or violet (1999)
Usage	Known used on First Day Covers serviced by household employees.

## Meter Machine Postage Paid Cancellations



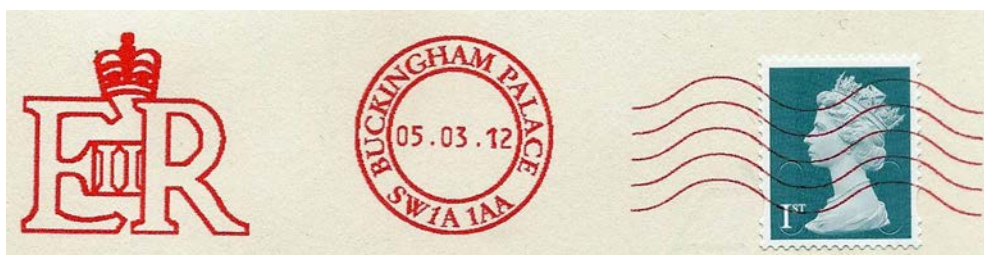
Date introduced	By 2004
Date range seen	2004 to 2012
Usage	Mail destined for any address, hence inclusion of 'GB', avoiding the need for a separate die for inland mail
Notes	Machine supplied by Pitney Bowes. Exists in red only



Date introduced	By 2005
Date range seen	2005 to 2012
Usage	Mail destined for any address, hence inclusion of 'GB', avoiding the need for a separate die for inland mail
Notes	Machine supplied by Pitney Bowes. Exists in red only. Some examples exist with a wider spacing between the SW1A and 1AA parts of the postcode (seen 2009)



Date introduced	By 2004
Date range seen	2004 to 2012
Usage	Mail destined for any address, hence inclusion of 'GB', avoiding the need for a separate die for inland mail
Notes	Machine supplied by Pitney Bowes. Exists in red only on primarily office mail from the likes of Royal Collection Enterprises.



Date introduced	2012
Date range seen	2012 to 2012
Usage	Mail destined for inland addresses only. Used on letters of congratulations sent to Her Majesty on the occasion of Her Diamond Jubilee
Notes	Machine supplied by Pitney Bowes. Exists in red only

## Rectangular Postage Paid Cancellations



Date introduced	1998
Date range seen	1998 to 2002
Usage	First class mail destined for inland addresses

## Not seen but known to exist

Date introduced	2008
Date range seen	2012 to 2012
Usage	Second class mail destined for inland addresses



Date introduced	1998
Date range seen	1998 to 2012
Usage	Mail destined for overseas addresses, hence inclusion of Great Britain.

## Notes

However, it has been seen in red on inland mail  
Seen in black and red. No significance in this.



## **Birkhall**

When at Birkhall, The Prince of Wales and The Duchess of Cornwall enjoy fishing and walking in the Scottish countryside. Mail from this residence is collected and handled by Balmoral Castle when Their Royal Highnesses are in residence.

## **Castle of Mey**

In 1952 Queen Elizabeth The Queen Mother saw the Castle and despite its poor condition, she purchased it that year and set about renovating and restoring both the Castle and its gardens. In 1996, The Queen Mother established The Queen Elizabeth Castle of Mey Trust, to which the castle was transferred later that year. Mail from this residence is collected and flown to Buckingham palace where it receives the red franking machine marking when Their Royal Highnesses are in residence.

## **Clarence House**

Clarence House, which stands beside St James's Palace, was built between 1825 and 1827 to the designs of John Nash for Prince William Henry, Duke of Clarence. Today Clarence House is the official London residence of The Prince of Wales and The Duchess of Cornwall, and Princes William and Harry. Mail from this house is collected and handled by Buckingham Palace, hence lack of postal markings and cachets.

## Estate and Other Offices

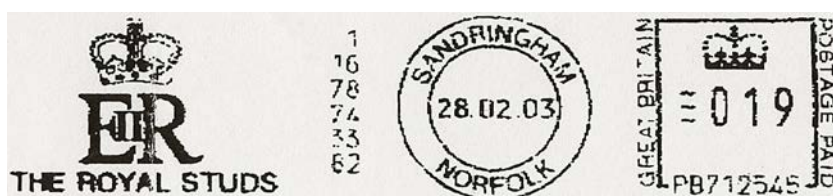
### Possibly still in Use in Q1 2012

#### Meter Machine Cancellations

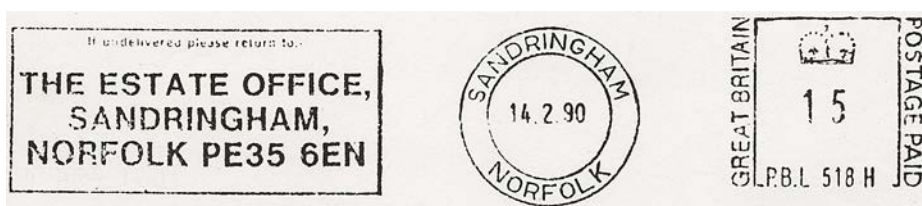
All struck in red ink, but only B&W photocopies seen.



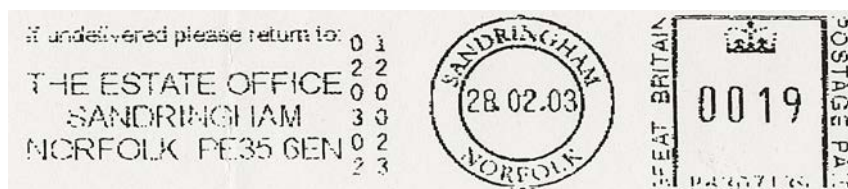
Balmoral Castle – Machine PB237976



The Royal Studs, Sandringham - Machine PB712545



The Estate Office, Sandringham - Machine P.B.L518H



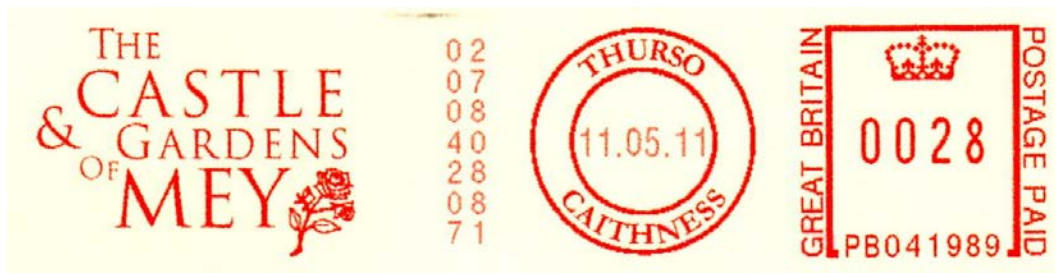
The Estate Office, Sandringham - Machine PB307139.  
Possible replacement for above?



The Prince's Youth Business Trust, London –  
Machine PBG09640.

**All above introduced pre-Vidler era, but still used subsequently**

**Still in Use in Q1 2012**



The Estate Office, The Castle and Gardens of Mey - Machine PB041989

## **Highgrove House**

Highgrove House near Tetbury in Gloucestershire is The Prince of Wales and The Duchess of Cornwall's family home. The Duchy of Cornwall owns Highgrove, and bought the house, garden and nearby farmland now known as Duchy Home Farm in 1980. Mail from this house is collected and handled by Royal Mail Gloucester when Their Royal Highnesses are in residence.

### **Still in Use in Q1 2012**

#### **Rectangular Postage Paid Cancellations**



Date introduced	2002 (11 January)
Date range seen	2002 to 2002
Usage	Mail destined for inland addresses, but only when Prince Charles is in residence
Notes	A separate cancellation for overseas mail use (i.e. with Great Britain incorporated) was not created.

#### **Not seen but known to exist**

Date introduced	2008
Date range seen	2012 to 2012
Usage	Second class mail destined for inland addresses

#### **Not seen but known to exist**

Date introduced	2008
Date range seen	2012 to 2012
Usage	Mail destined for overseas addresses

Prior to these cancellations Highgrove House mail would only be identifiable by Prince of Wales feathers on envelope flaps

## Kensington Palace

Today Kensington Palace contains the offices and London residences of The Duke and Duchess of Gloucester, The Duke and Duchess of Kent and Prince and Princess Michael of Kent. Princess Margaret, Diana, Princess of Wales and Princess Alice, Duchess of Gloucester used to live in Kensington Palace and have their offices there. Mail from this palace is collected and handled by Buckingham Palace, hence lack of postal markings on all but mail from the Gloucester and the Michael families resident in the palace.

## No longer in Use

### Rectangular Postage Paid Cancellations



Date introduced	19__
Date range seen	19__ to 19__
Usage	Mail destined for inland addresses by the Michaels and the Gloucester families resident within Kensington Palace
Notes	Experimental cancellation used for a short period of time only PPI contract number W7047. Seen in blue only



Date introduced	19__
Date range seen	19__ to 19__
Usage	Mail destined for inland and overseas addresses by the Michaels and the Gloucester families resident within Kensington Palace
Notes	PPI contract number W7047. Replaced <b>KP1</b> . Seen in black or purple. Known used on mail from Prince Edward when at Bagshot Park in 2007.



## Palace of Holyroodhouse

Founded as a monastery in 1128, the Palace of Holyroodhouse in Edinburgh is The Queen's official residence in Scotland. Mail from this palace is collected and handled by Royal Mail Edinburgh. Post Office counter services were withdrawn on 6 July 2000.

### No longer in Use



Introduced pre-Vidler era, but still used subsequently

## Rectangular Postage Paid Cancellation



Date introduced  
Intended Usage

Never introduced. Only proof pulls should exist  
Mail destined for overseas addresses, hence inclusion of Great Britain



Date introduced  
Date range seen  
Usage

By 2003  
2003 to 2003  
Mail destined for inland addresses by Royal Collection Enterprises, Edinburgh

Notes

PPI contract number HQ7397. Seen in blue only



Date introduced  
Date range seen

By 2003  
2003 to 2003

Usage Mail destined for inland and overseas addresses, hence inclusion of Great Britain, by Royal Collection Enterprises, Edinburgh

Notes PPI contract number HQ7397. Seen in blue (crisp) and black (worn)



Date introduced By 2003

Date range seen 2003 to 2003

Usage Mail destined for inland and overseas addresses, hence inclusion of "GB", by Royal Collection Enterprises, Edinburgh

Notes PPI contract number HQ7397. Also seen (above) unusually cancelling a postage stamp

## Still in Use in Q1 2012

### Circular Certifying Cachets



Date introduced	By 2003
Date range seen	2003 to 2003
Usage	Mail from Royal Collection Enterprises, Palace of Holyroodhouse Edinburgh
Notes	Seen used in blue and black. Rarely used these days

### Circular Court Post Office Date Stamps

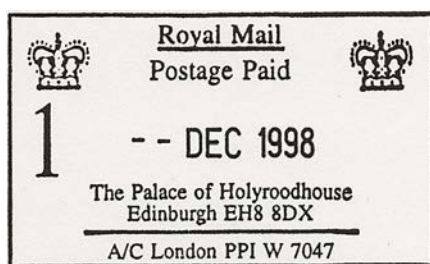


Date introduced	By 1998
Date range seen	1998 to 1998
Usage	General use

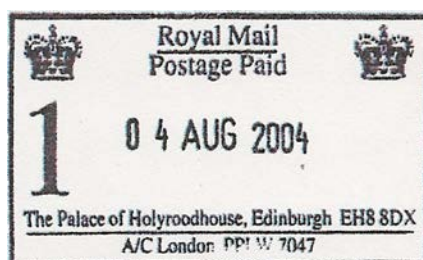
### Rectangular Postage Paid Cancellation



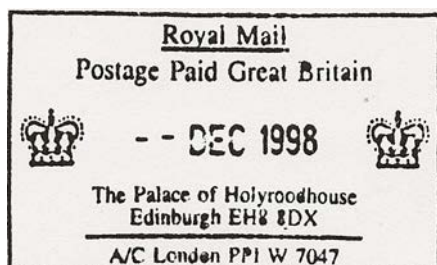
Date introduced	Officially described as "never introduced". Only proof pulls should exist, but an example has been seen properly used on cover in 2008. As it contravenes usage terms by excluding the term "A/C", it is surprising that it was utilised
Intended Usage	First class mail destined for inland addresses



Date introduced 1998  
 Date range seen 1998 to 2011  
 Usage First class mail destined for inland addresses  
 Notes Incorporation of Edinburgh and postcode, plus 'A/C'. Introduced due to new 'operational requirements'



Date introduced By 2004  
 Date range seen 2004 to 2004  
 Usage First class mail destined for inland addresses  
 Notes Note different crown, thicker "1" and single line address.



Date introduced 1998  
 Date range seen 1998 to 2012  
 Usage Mail destined for overseas addresses, hence inclusion of Great Britain  
 Notes Incorporation of Edinburgh and postcode, plus 'A/C'. Introduced due to new 'operational requirements'



Date introduced	2008
Date range seen	2012 to 2012
Usage	Second class mail destined for inland addresses. Only seen in blue/red bi-colour. Two line address



Date introduced	2008
Date range seen	2012 to 2012
Usage	Second class mail destined for inland addresses. Single line address

## Departmental Certifying Cachets



Date introduced	By 20__
Date range seen	20__ to 20__
Usage	Seen used on mail from the Lord Chamberlain at Holyrood as a pre-printed cachet on the envelope, i.e. it is not hand applied



Date introduced	Well before 1990
Date range seen	2008 to 2008



## Usage

Seen used on mail from the Purse Bearer at Holyrood in conjunction with a boxed "1" to indicate first class postage

## **St. James's Palace**

St. James's Palace is the senior palace of the Sovereign, with a long history as a Royal residence. The offices of the Royal Collection Department, the Marshal of the Diplomatic Corps, the Central Chancery of the Orders of Knighthood, the Chapel Royal, the Gentlemen at Arms, the Yeomen of the Guard and the Queen's Watermen are all located at St. James's Palace. Since January 2009, the Household Office of Prince William and Prince Harry has been based at St. James's Palace, although their official residence remains Clarence House. St. James's Palace contains the London residences of The Prince of Wales, The Princess Royal and Princess Alexandra. Mail from this palace is handled by Buckingham Palace, hence lack of postal markings.

## **No longer in Use**

### **Rectangular Postage Paid Cancellations**



Date introduced	19__
Date range seen	19__ to 19__
Usage	Mail destined for inland addresses by Royal Collection Enterprises in London
Notes	PPI contract number HQ7397

### **Departmental Certifying Cachets**



Date introduced	19__
Date range seen	19__ to 19__
Usage	Seen used on mail from The Royal Collection
Notes	Postcode is shown as SW1A <u>1JR</u> . Only seen in blue

## Still in Use in Q1 2012

### Departmental Certifying Cachets

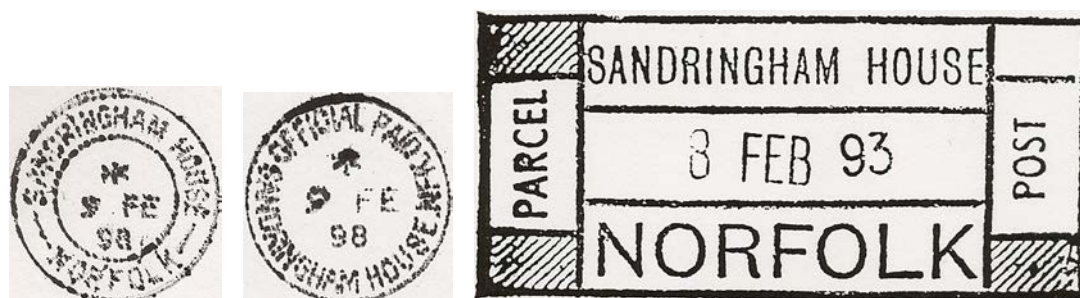


Date introduced	19__
Date range seen	19__ to 19__
Usage	Seen used on mail from The Royal Collection
Notes	Postcode is shown as SW1A <u>1BQ</u> . Only seen on black

## Sandringham House

Sandringham House in Norfolk has been the private home of four generations of Sovereigns since 1862. Mail from this residence is collected and handled by Royal Mail King's Lynn. Post Office counter services were withdrawn on 11 February 2001.

### No longer in Use



Introduced pre-Vidler era, but still used subsequently

## Rectangular Postage Paid Cancellations



Date introduced  
Intended Usage

Never introduced. Only proof pulls should exist  
First class mail destined for inland addresses



Date introduced  
Intended Usage

Never introduced. Only proof pulls should exist  
Mail destined for overseas addresses, hence inclusion of Great Britain

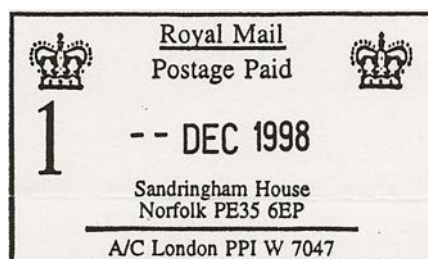
## Still in Use in Q1 2012

### Circular Court Post Office Date Stamps



Date introduced	By 1998
Date range seen	1998 to 2001
Usage	Seen used on First Day Cover envelopes

### Rectangular Postage Paid Cancellations

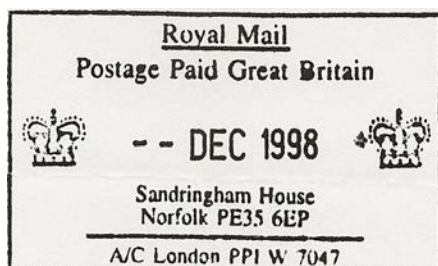


Date introduced	1998
Date range seen	1998 to 1999
Usage	First class mail destined for inland addresses
Notes	Incorporation of Norfolk and postcode, plus 'A/C'. Introduced due to new 'operational requirements'



Date introduced	By 2012
Date range seen	2012 to 2012
Usage	First class mail destined for inland addresses
Notes	Incorporation of Norfolk and postcode, plus 'A/C'. Introduced due to new 'operational requirements'





Date introduced	1998
Date range seen	1998 to 2012
Usage	Mail destined for overseas addresses, hence inclusion of Great Britain
Notes	Incorporation of Norfolk and postcode, plus 'A/C'. Introduced due to new 'operational requirements'

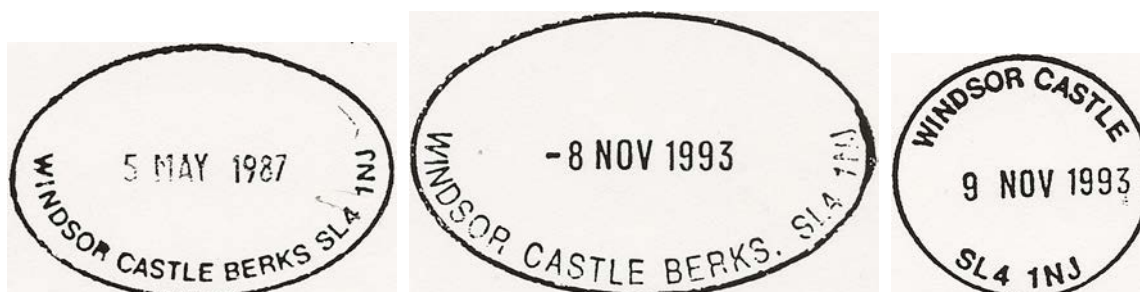


Date introduced	2008
Date range seen	2012 to 2012
Usage	Second class mail destined for inland addresses

## Windsor Castle

Windsor Castle is an official residence of The Queen and the largest occupied castle in the world. A Royal home and fortress for over 900 years, the Castle remains a working palace today. Mail from this residence is collected and handled by Royal Mail Slough.

### No longer in Use



All above introduced pre-Vidler era, but still used subsequently

## **Circular Machine Struck Royal Monogram Cachets**



Date introduced	1999 (5 April)
Date range seen	1999 to 2003
Usage	Applied by franking machine in conjunction with the initial blue postage paid meter markings recorded below, but only on mail destined for Inland and Commonwealth nations where Her Majesty

	or her Household was writing to one of The Queen's subjects. Foreign mail was therefore not treated this way.
Notes	Not used where a hand struck certifying mark had already been applied. Exists in blue only

## Meter Machine Postage Paid Cancellations



Date introduced	1999 (5 April)
Date range seen	1999 to 2003
Usage	Mail destined for any address, hence inclusion of Great Britain, avoiding the need for a separate die for inland mail
Notes	Machine supplied by Pitney Bowes. Exists in blue only



Date introduced	2001 (2 April)
Date range seen	2001 to 2003
Usage	Mail destined for any address, hence inclusion of Great Britain, avoiding the need for a separate die for inland mail
Notes	Machine supplied by Pitney Bowes. Exists in blue only

## Still in Use in Q1 2012

### **Circular Hand Struck Royal Monogram Cachets**



Date introduced	19__
Date range seen	19__ to 2012
Usage	Outgoing mail destined for Inland and Commonwealth addresses only. Not used on Foreign mail
Notes	Various sizes exist

### **Circular Court Post Office Date Stamps**



Date introduced	By 2003
Date range seen	2003 to 2005
Usage	Known used on First Day Covers serviced by household employees. Also used on a certificate of posting form accompanying the FDC.

## Circular Date Stamps



Date introduced	By 1998
Date range seen	1998 to 2002
Usage	Known used on First Day Covers serviced by household employees.



Date introduced	By 2012
Date range seen	2012 to 2012
Usage	Known used on First Day Covers serviced by household employees.

## Meter Machine Postage Paid Cancellations



**Buckingham Palace style**

**Not seen but  
known to exist**

Date introduced	
Date range seen	2012
Usage	Mail destined for any address, hence inclusion of Great Britain, avoiding the need for a separate die for inland mail
Notes	Machine supplied by Pitney Bowes. Exists in red only



**Buckingham Palace style**



## Not seen but known to exist

Date introduced	
Date range seen	2012
Usage	Mail destined for any address, hence inclusion of Great Britain, avoiding the need for a separate die for inland mail
Notes	Machine supplied by Pitney Bowes. Exists in red only

## Rectangular Postage Paid Cancellations



Date introduced	1998
Date range seen	1998 to 1999
Usage	First class mail destined for inland addresses



**WC8**

Date introduced	1998
Date range seen	1998 to 2005
Usage	Mail destined for overseas addresses, hence inclusion of Great Britain.



Date introduced	By 2010
Date range seen	2010 to 2010
Usage	Mail destined for overseas addresses, hence inclusion of Great Britain.

Notes	As above, but different crowns. Presumably created to replace a worn-out cancellation.
-------	--

## **Not seen but known to exist**

Date introduced	2008
Date range seen	2012 to 2012
Usage	Second class mail destined for inland addresses